



## ELECTRIC CHARACTERISTICS

Model NO.	B6MY27018L001	B6MY27518L001	B6MY28018L001
Max. Power ( Pmax )	270	275	280
Max. Power Voltage ( Vmp )	18.6	18.7	18.8
Max. Power Current ( Imp )	14.5	14.7	14.9
Open Circuit Voltage ( Voc )	22.7	22.8	22.9
Short Circuit Current ( Isc )	15.4	15.5	15.7

## SPECIFICATION

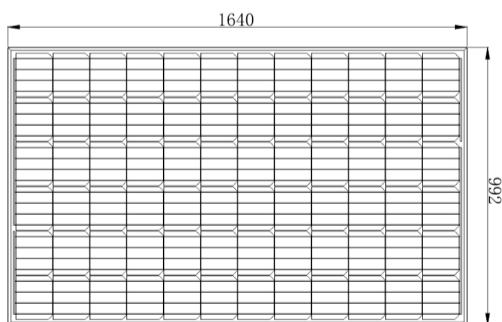
Model NO.	B6MY27018L001	B6MY27518L001	B6MY28018L001
Cell Type	MONO		
Dimension (mm)	1640*992*35		
Cable Length (mm)	900		
Type of Connector	None/MC4		
Weight (kg)	18.5		

B6MY27018L001

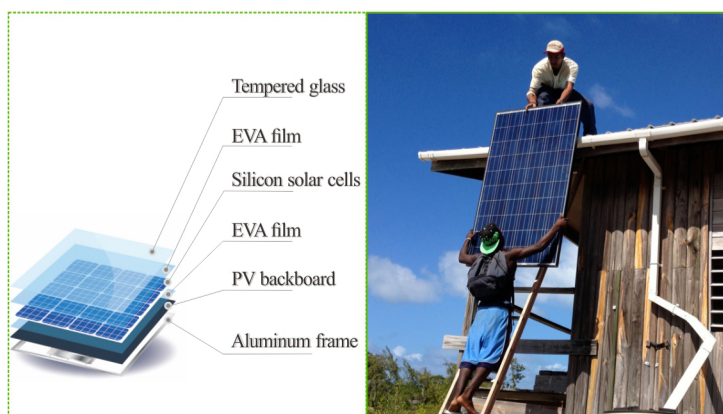
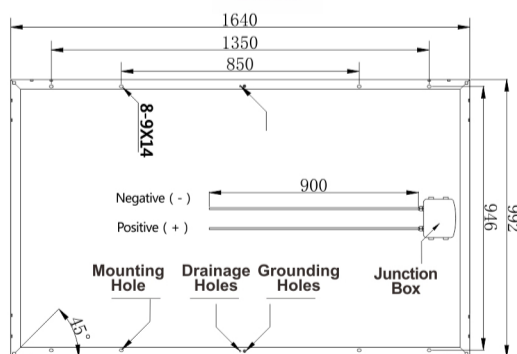
B6MY27518L001

B6MY28018L001

Front



Back



- High energy conversion rate
- Customized design
- Green energy
- 25 years lifetime

